

Brickhill Parish Council News

The newsletter of Brickhill Parish Council

Issue Number 18, September 2009

NEW NATURAL PLAY FACILITIES ON WAVENEY GREEN

Environmental charity Groundwork is working in partnership with Bedford Borough Council and Brickhill Parish Council to design new natural play facilities for the open space on Waveney Avenue. Rather than just being a traditional play area with swings and slides, the new natural play facilities will be developed to include natural features of the site such as land forms, boulders, mounds, trees and bushes to encourage imaginative play activities and improve the site for wildlife whilst protecting its natural appearance. To ensure the facilities meet the needs of the Brickhill community some consultation has been carried out at Beauchamp Middle School and at the 'Gathering on the Green' event and there is still time to contribute your views.



Groundwork will be presenting the first draft design at an open Parish Council meeting on 5th October at St Mark's Church, Calder Rise. Please pop along anytime between 6pm and 8pm to hear more about the project and comment on the design. Alternatively the design will also be on display at St Mark's Community Centre on Monday 5th & Tuesday 6th October and at Brickhill Community Centre on Wednesday 7th and Thursday 8th October please pop in and leave your comments.

Funding for the natural play facilities has already been secured from WREN, a not-for-profit business that awards grants to community projects and the project is also likely to receive funding from Bedford Borough Council's Playbuilder fund. Work is expected to start on site in January 2010. If you would like any information on the project please contact Debbie Vidler at Groundwork on 01582 720147 or email Deborah.vidler@groundwork.org.uk.

GET INTO TABLE TENNIS



OPEN TO ALL AGED 16 - 19

Wednesdays : 7.00pm-8.00pm

23rd September – 25th November

Sports Hall @ **St. Thomas More Upper School**,
Tyne Crescent, Brickhill

Cost: £2 per session OR bring a friend and only pay £1 each!!

To book your place - TEXT - your name, the activity, the venue to team BEDS&LUTON on 07833 664204 or CALL 01582 813760

GET BACK INTO TABLE TENNIS

OPEN TO ALL AGED 16+

Wednesdays : 8.00pm-9.00pm

23rd September – 25th November

Sports Hall @ **St. Thomas More Upper School**,
Tyne Crescent, Brickhill



ARE YOU ON A LOW-INCOME, UNEMPLOYED, SEEKING WORK OR HAVE A DISABILITY?

Then why not come along to our Friday Afternoon Circuit group held in the Dance Studio at Robinson Pool, Foster Hill Road, Bedford from 2-3pm.

The group is run on behalf of the Bedfordshire NHS Trust at just £2.50 per person. Dress code is sportswear and trainers.

It's a great opportunity to get fit, have fun and meet new people! For further details telephone 08714 235044.

Parish Council Office Contact Details:

Clerk to the Council

Delia Shephard

Assistant Clerk/Allotments Officer

Alison Southern

c/o St Mark's Church & Community Centre

Calder Rise, Brickhill

Bedford MK41 7UY

Telephone: 01234 271708

clerk@brickhillparishcouncil.gov.uk

Public drop in session every Tuesday
10 am - 12 noon

ANOTHER GATHERING ON THE GREEN



The sun shone on Waveney Green on Thursday 27 August when residents of Brickhill enjoyed another community event arranged by the Parish Council and co-sponsored by Extended Schools Services - St Thomas More Cluster with help from Bedfordshire Police, Bedford Borough Council, bpha, St Mark's Church and Brickhill Baptist Church. Young people enjoyed lots of free activities including a climbing wall, bouncy castles, drumming workshop, kickboxing, MARRS ball, 5-a-side football and face painting and nail art. The local police and fire services attended with their vehicles and lots of community groups were able to publicise their services.



A very big thank you from the Parish Council to everyone who provided their services and helped to make the event so successful. The Police estimate around 500 local people attended over the course of the day.

OVERHANGING TREES AND SHRUBS

Please remember to keep your garden shrubs and trees trimmed back so they do not get in the way of pedestrians on Brickhill's pavements or footpaths. It is the responsibility of each property owner to keep the surrounding footpath clear of vegetation, remember not everyone can walk round hazards safely and easily. If you need to report any problems with obstacles to your walking in the parish please contact the Environment helpline at Bedford Borough Council on **01234 267422**.

Local Bus Service Information

The main Monday to Saturday bus services for our area are:

- Stagecoach No 6 Tyne Crescent to town centre
- Stagecoach No 7 from/to Woodside via Putnoe Lane and Kimbolton Rd
- Cedar Coaches nos 152 and 153 along the length of Kimbolton Rd to/from town centre (Harpur St)

On Fridays there are two free buses to the Tesco store at Riverfield Drive.

On Sundays and Bank Holidays there are also Cedar Coaches services A and B going through Brickhill to the town centre.

The Parish Council has recently established a Bus Shelters & Services Group which aims to provide information to local residents about bus services and to work with local bus users and providers to improve services locally. Please contact Cllrs Blakeman, Green or Marriott if you want any more information about local bus services or have any transport concerns – contact details on the back page of this newsletter.

Peter Blakeman

QUALITY HOUSEKEEPING

Need a hand with the housework?

We offer a full 'top to bottom' cleaning service including ovens, fridges (etc), ironing and interior windows, on a regular basis or as a one off spring clean.

Fully insured and reliable, sensible prices. Excellent references available on request.

For more information
Please telephone:
01234 307322
Mobile 07940 755718



Stop Press - Anti-social Behaviour in Mowsbury Park Car Park

Parish and Borough Councillors have been working with Bedford Borough Council and the Police to try to resolve ongoing noise problems. At its September meeting the Parish Council agreed to contribute £1000 towards the cost of a barrier to the car park provided that the balance of funding and maintenance for this project can be obtained from other sources. It is hoped a night-time barrier could reduce noise problems. We will keep you informed of progress.

Delia Shephard, Clerk to the Council

ALLOTMENT TENANTS' MEETING

Tuesday 13th September 7:30pm
Biffa Room, St Mark's Church Community Centre,
Calder Rise, Brickhill MK41 7UY

The Parish Council has set up an allotments working group to formulate a strategy for the site. The annual tenants meeting is your opportunity to meet members of this group and the Allotments Officer to discuss any issues or ideas for the site.

The cup for best allotment will be presented by the Beds and District Gardening Association.

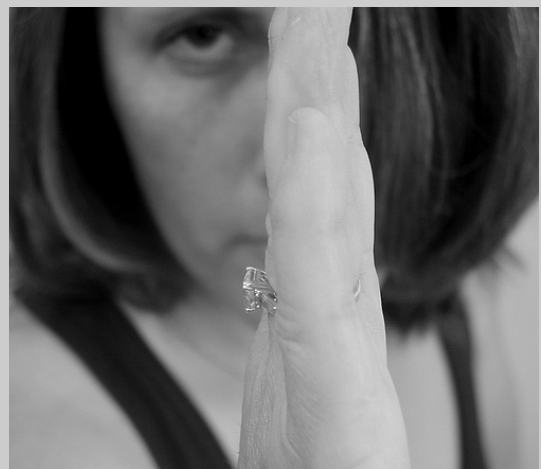
ALL WELCOME


To save - To react - To act

All for your own safety

**Female self-defence for
beginners**

(First lesson is free)



If you are interested, please contact
Mike on 01234 345412 or email  janmikesinger@googlemail.com

Brickhill Parish Councillors
www.brickhillparishcouncil.gov.uk

Cllr Mark Fitzpatrick (Chair)
20 Nursery Gardens, Brickhill, MK41 8DU
☎01234 357259 ✉ markfitzp@cix.co.uk

Cllr Stuart Buchanan
19 Starling Way, Brickhill MK41 7YF
☎08714 235044
✉ stuartbuchanan19@tiscali.co.uk

Cllr Peter Blakeman (Planning Committee Chair) 15 Dove Road, Brickhill, MK41 7AA
☎01234 355952
✉ pj.blakeman@btopenworld.com

Cllr Gurmel Chambers
16 Trent Road, Bedford MK41 7EF
☎01234 212536
✉ CHAMBERSB2B@aol.com

Cllr Stuart Green
39 Larkway, Brickhill, MK41 7JW
☎ 01234 354339
✉ stuart.green5938@ntlworld.com

Cllr Joanne Laybourn
43 Fulmar Road, Bedford MK41 7JZ
☎01234 268477
✉ joanne.laybourn@hotmail.co.uk

Cllr Patricia Marriott
18 Leven Walk, Brickhill MK41 7XE
☎07818 052363 ✉ patm1958@hotmail.com

Cllr Pat Ovenell
12 Nightingale Avenue, Brickhill, MK41 7JB
☎01234 341422

Cllr Wendy Rider
23 Orwell Close, Brickhill, MK41 7BQ
☎01234 303254 ✉ wendyrider41@hotmail.com

Cllr Charles Royden (also Borough Councillor)
The Vicarage, Calder Rise, Brickhill, MK41 7UY
☎01234 309175 ✉ vicar@thisischurch.com

Cllr Ray Seymour (Vice-Chair)
11 Calder Rise, Brickhill, MK41 7UY
☎01234 305695 ✉ ray@tgis.co.uk

Cllr Raymond Waterhouse
64 Curlew Crescent, Brickhill MK41 7HZ
☎01234 355801
✉ raymond.waterhouse@yahoo.co.uk

Cllr Andrew Wilkins
33 Douglas Road, Brickhill MK41 7YF
☎01234 308957 ✉
andywilkins.bpc@ntlworld.com

Brickhill Parish Council
Meeting Dates

Meetings will be held at St Mark's Church
Community Centre, Calder Rise, Brickhill.

Full Parish Council Meetings 7.30 pm: 1 October, 5
November, 7 January, 4 February

**Planning Committee Meetings 6.45 pm if on the
same day as a full Parish Council meeting
otherwise 7.00pm:** 1 & 22 October, 19 November

Advertisements

MANTON TRAVEL SERVICES

01234 343238 - 07803 518122

Email: e.wall2@ntlworld.com

November 30th - December 4th
Turkey & Tinsel - 5 Days

Blackpool - half board, seafront hotel, entertainment every night, 2 excursions, lift, porters, waitress service, 1 double and 2 twin rooms still available. Executive coach travel, near home pick up/drop off points. £182 per person + £10 insurance. Book now, £20 deposit, balance due by September 26th.

Saturday December 12th - Christmas shopping trip to Springfields, Spalding, Lincolnshire

Adults £19.50, Seniors £18.00, Child £17.00. Book/pay by November 27th.

D-I-Why?
You Do It For Me!

from as little as **£14**

The GreenThumb Service includes:

- Professional Feeds not available at DIY stores or Garden Centres
- A professional service that costs less than DIY
- No minimum contract, Pay-As-You-Go service
- Fully trained and uniformed operatives
- Hollow-Tine Aeration and Scarification to tackle the main causes of moss

Call today for your **FREE** lawn analysis and quote on **0800 0111 222** or locally on **01234 709 345**

www.greenthumb.co.uk

GreenThumb
LAWN TREATMENT SERVICE

Brickhill News is published by Brickhill Parish Council, St Mark's Church & Community Centre, Calder Rise, Bedford MK41 7UY. Printed by White Hart Press, 58a York Street, Bedford. Disclaimer: Whilst every effort has been made to ensure that the information provided is accurate at the time of going to press, the Parish Council takes no responsibility for the errors or omissions in editorial or advertising content. The views expressed by contributors are not necessarily those of the Council. If you would like to advertise in this publication please contact the Clerk using the details above. Adverts are accepted on a first come first served basis. Current advertising rates are: A5 advert - £50 per insertion, A6 advert - £25 per insertion.